



باسكو  
انترناشيونال تراديغ ذ.م.م

**PASCO**

International Trading W.L.L

**ONE STOP SOLUTION FOR PIPING COMPONENT  
IN OIL, GAS & POWER SECTORS**



**PASCO INTERNATIONAL TRADING LLC**

P.O.BOX: 47158, OFFICE# 750 ST.63 BUILDING NUMBER  
71 ZONE UMM SALAL, DOHA  
QATAR MOB : 00974 77871414, 00974 70479386

**PASCO INTERNATIONAL TRADING LLC**

30 N. GOULD STREET, STE 33354 SHERIDAN, WYOMING 82801  
UNITED STATES OF AMERICA ( USA )  
USA : +1- (307) 392 - 0949

mail: [info@pascoholding.com](mailto:info@pascoholding.com) [sales@pascoholding.com](mailto:sales@pascoholding.com) [www.pascoholding.com](http://www.pascoholding.com)



## INTRODUCTION

PASCO Holding is a group of highly qualified technocrats, with fully owned state of the art technology, Manufacturing Plants at various locations in India.

**Pasco International LLC** is an ISO 9001: 2015 company, with over 30 year expertise in Design, Manufacturing & Supply of Instrumentation Products, Hardware & Various other Piping Solutions in all Metallurgies, having extensive experience in catering to requirements of Oil & Gas Onshore/Offshore), Power, Atomic , Chemicals & Fertilizers & Petrochemical Industries. PASCO roots are currently established in Qatar ,USA and India

### Instrumentation Fittings & Hardware

Extensive Product Range

Material: All metallurgies , SS 304 / 304L, SS 316 / 316L, SS 321 (NACE & NON NACE), Brass, Monel. Sizes: 1/16" thru 1" OD in fractional and 2MM thru 25MM in Metric End Connections: From 1/8" thru 1" NPT Male/Female (BSP or any other thread on request)

Set with the motto of being a one stop solution for all Piping Components in Oil, Gas & Power requirements of all our esteemed clients. We are offering a unique trading experience where client satisfaction is our top priority



# In Tune



# With Latest Technology

**PASCO INTERNATIONAL TRADING**, offers design and technical assistance to its valued customers resulting in better products. We are always ready to assist customers in developing products that can be of mutual benefit and thus ensure **Pasco** as an ideal partner at all times. We have developed more than 50 varieties of Valves for various applications and as per customer's design and working requirements.

We believe that a top class manufacturing setup when combined with an intent of top class customer service shall result in the best quality valves.

" **PASCO** " has in-house R & D facility, design facility, in-house forging unit, captive foundry, state-of-the-art manufacturing facilities, in-house cryogenic test facility, in-house fire-safe test facility, cyclical simulation and type-approval simulation facility, in-house hard facing and overlay facilities, top notch assembly and testing facilities, in-house blasting, painting, tagging, marking & packing facilities.

## FEATURES

MATERIAL	ASTM SPECIFICATIONS
FLANGED ENDS	ASME B16.5 / MSS SP 44 / ASME B16.47
BUTT WELD ENDS	ASME B16.25
SOCKET WELD ENDS	ASME B16.11
SCREWED ENDS	ASME B1.20.1

## TESTING

GATE	API 598/ API 6D/ ISO 14313/ ISO 5208 / MESC
GLOBE & SLURRY	API 598/ BS EN 12266-1/ ISO 5208/ MESC
CHECK	API 598/ API 6D/ ISO 14313/ ISO 5208/ BS EN 12266-1/ API 594/ MESC
BALL	API 6D/ API 607/ ISO 5208/ BS EN 12266-1 & 2/ ISO 10497/ MESC
STRAINERS	API 598/ ISO 5208 / MESC
FORGED	API 598/ ISO 5208/ BS EN 12266-1/ MESC
PLUG	API 6D/ API 598/ MESC
BUTTERFLY	API 598/ MESC

# Features

# Certificates & Approvals

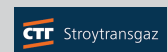


Our endless endeavor in pursuit of excellence has won us numerous international certifications and approvals.

## Certifications:

Accreditations from the American Petroleum Institute (API) - API 6D License, API 600 License, ISO 9001, ISO 14001, ISO 45001, PED CE, EAC, TRCU, Fire Safe Test Certificate, Emission control norms certificate, various end-user approvals, national and inter-national accreditations.

The Engineering Export Promotion Council has awarded us the "Certificate of Merit" and "Special Shield for Excellence in Export Performance".



Bharat Heavy Electricals Ltd.  
(A Govt. of India Undertaking)



**Disclaimer:** These logos displayed in this brochure are for illustrative purposes only to demonstrate our business relationship with these companies. All logos remain to be the intellectual property of their respective owners.



## FEATURES

DESIGN

API 600/ API 6D/ API 603/ BS 1414/ ISO 15761/ ISO 14313/ ISO 10434 / ASME B16.34



### GTV 101 WEDGE GATE VALVE

GTV 101						
RATING	150	300	600	900	1500	2500
INCHES	1/2"-48"	1/2"-48"	1/2"-48"	1/2"-36"	1/2"-24"	1/2"-24"
MM	15-1200	15-1200	15-1200	15-900	15-600	15-600

Note: Can be provided with split-wedge design, parallel-slide wedge design, double disc wedge design and spring energized wedge design

### CGT 101 THROUGH CONDUIT GATE VALVE

CGT 101						
RATING	150	300	600	900	1500	2500
INCHES	2"-48"	2"-48"	2"-48"	2"-36"	2"-24"	2"-24"
MM	50-1200	50-1200	50-1200	50-900	50-600	50-600



### PSV 101 PRESSURE SEAL WEDGE GATE VALVE

PSV 101						
RATING	600	900	1500	2500		
INCHES	2"-48"	2"-36"	2"-36"	2"-36"		
MM	50-1200	50-900	50-900	50-900		

### GSV 101 PRESSURE SEAL PARALLEL SLIDE GATE VALVE

GSV 101						
RATING	600	900	1500	2500		
INCHES	2"-48"	2"-36"	2"-36"	2"-36"		
MM	50-1200	50-900	50-900	50-900		



### BSV 101 BELLOW SEAL GATE VALVE

BSV 101						
RATING	150	300	600	800	1500	2500
INCHES	2"-16"	2"-16"	2"-12"	1/2"-2"	2"-12"	2"-12"
MM	50-400	50-400	50-300	15-50	50-300	50-300

Gate Valves



Pneumatic Gate Valve



Pneumatic Gate valve with manual over-ride



Pneumatic parallel slide Gate valve



Pneumatic Forged Gate Valve



Pneumatic double disc Gate valve



Pneumatic Knife Gate Valve



High Pressure Parallel Double Disc Gate Valve



Electric Gate Valve



Electric through-conduit Gate valve



Electric parallel slide Gate valve



Electric pressure-seal parallel slide Gate valve

## Actuated Gate Valves



## FEATURES

DESIGN

BS 1873/ ASME B16.34/ BS 5352/ API 623/ ISO 15761

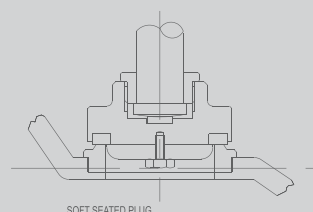
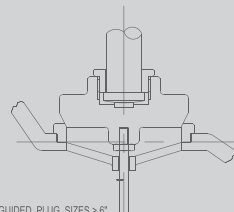
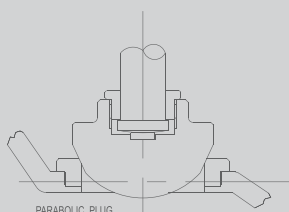


### GBV 102 GLOBE VALVE

#### GBV 102

RATING	150	300	600	900	1500	2500
INCHES	1/2"-24"	1/2"-24"	1/2"-24"	1/2"-24"	1/2"-24"	1/2"-24"
MM	15-600	15-600	15-600	15-600	15-600	15-600

Note: Can be customized with extended-stem and extended bonnet design.



### PSV 102 PRESSURE SEAL GLOBE VALVE

#### PSV 102

RATING	600	900	1500	2500		
INCHES	2"-24"	2"-24"	2"-24"	2"-24"		
MM	50-600	50-600	50-600	50-600		



### AGV 102 ANGLE GLOBE VALVE

#### AGV 102

RATING	150	300	600	900	1500	2500
INCHES	1/2"-16"	1/2"-16"	1/2"-16"	1/2"-16"	1/2"-16"	1/2"-12"
MM	15-400	15-400	15-400	15-400	15-400	15-300

### YGV 104 FORGED Y TYPE GLOBE VALVE

#### YGV 104

RATING	800	1500	2500			
INCHES	1/2"-2"	1/2"-2"	1/2"-2"			
MM	15-50	15-50	15-50			



### BSV 102 BELLOW SEAL GLOBE VALVE

#### BSV 102

RATING	150	300	600	800	1500/2500
INCHES	2"-16"	2"-16"	2"-12"	1/2"-2"	2"-12"
MM	50-400	50-400	50-300	15-50	50-300

Globe Valves



Cast Steel Regulating  
Globe Valve



Small Caliber Forged Steel  
Control Globe Valve



Sanitary Grade Forged Steel  
Control Globe Valve



Pneumatic  
Control Globe Valve



Electric  
Control Globe Valve



Low Temperature  
Control Globe Valve



Ultra High Temperature and  
High Pressure Control Globe Valve



Forged Steel Regulating  
Globe Valve



Thin Film Self-Propelled Type  
Control Globe Valve



Piston Type Operated  
Control Globe Valve



Self Operated Control Globe Valve

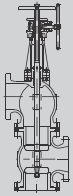
## Actuated Globe Valves



## FEATURES

DESIGN

ASME B16.34/ BS 1873



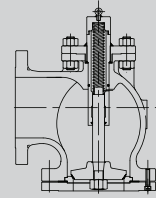
3 WAY ANGLE VALVE  
ATV 303 SERIES



### ANGLE VALVE, ANGLE BAYONET VALVE

#### AGV 303, AFV 123, ACV 408, ATV 303

RATING	150	300	600
INCHES	2"-24"	2"-24"	2"-24"
MM	50-600	50-600	50-600



ANGLE CHECK VALVE  
ACV 408 SERIES

### TANK BOTTOM VALVE

#### FBV 120

RATING	150	300			
INCHES	2"-24"	2"-24"			
MM	50-600	50-600			



Note: Can be provided with Open-To-Tank design or Open-To-Body design. Can be offered in quick-bleeding valve design



### TANK BOTTOM VALVE (CONNECTION TO PIPE)

#### FBV 121

RATING	150	300			
INCHES	2"-24"	2"-24"			
MM	50-600	50-600			

Note: Can be offered in quick-bleeding valve design. Can be offered in 90° design

### Y TYPE GLOBE VALVE (SPLIT BODY)

#### YGV 301

RATING	150	300	600	900	1500	2500
INCHES	2"-24"	2"-24"	2"-16"	2"-12"	2"-12"	2"-12"
MM	50-600	50-600	50-400	50-300	50-300	50-300



### Y TYPE GLOBE VALVE (MONO BODY)

#### YGV 302

RATING	150	300	600	900	1500	2500
INCHES	2"-24"	2"-24"	2"-16"	2"-16"	2"-12"	2"-12"
MM	50-600	50-600	50-400	50-400	50-300	50-300

Slurry Valves



## FEATURES

DESIGN

ASME B16.34/ BS 1873



### YGV 106

YGV 106						
RATING	150	300	600	900	1500	2500
INCHES	1"-24"	1"-24"	1"-16"	1"-12"	1"-12"	1"-12"
MM	25-600	25-600	25-400	25-300	25-300	25-300

### YGV 108

#### Y PATTERN STOP-CHECK VALVE

YGV 108						
RATING	150	300	600	900	1500	2500
INCHES	1"-24"	1"-24"	1"-16"	1"-12"	1"-12"	1"-12"
MM	25-600	25-600	25-400	25-300	25-300	25-300



Valves can be offered in various modes of actuation.



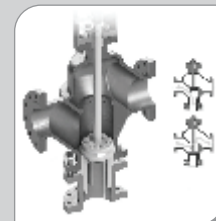
### YGV 110

YGV 110						
RATING	150	300	600	900	1500	2500
INCHES	1"-16"	1"-16"	1"-16"	1"-12"	1"-12"	1"-12"
MM	25-400	25-400	25-400	25-300	25-300	25-300

### YGV 112

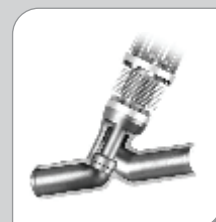
#### THREE WAY GLOBE VALVE

YGV 112						
RATING	150	300	600	900	1500	2500
INCHES	1"-16"	1"-16"	1"-16"	1"-12"	1"-12"	1"-12"
MM	25-400	25-400	25-400	25-300	25-300	25-300



Valves can be given in BELLOWS-SEALED option for absolute protection from any fugitive emission.

Valves can be given for ultra-high temperature applications in suitable metallurgical combinations along with cooling fins to minimize heat transfer and adhering to fire-protection norms.



# Y-Pattern Valves

# NON-RETURN (CHECK) VALVES



## FEATURES

DESIGN

API 6D / API 594 / BS 1868 / ASME B16.34



### DUAL PLATE WAFER CHECK VALVE (METAL SEATED / SOFT SEATED)

#### CHV 406

RATING	150	300	600	900	1500	2500
INCHES	2"-60"	2"-60"	2"-48"	2"-48"	2"-48"	2"-48"
MM	50-1500	50-1500	50-1200	50-1200	50-1200	50-1200

### NON-SLAM (AXIAL FLOW) NOZZLE CHECK VALVE

#### CHV 417

RATING	150	300	600	900	1500	2500
INCHES	2"-48"	2"-48"	2"-48"	2"-48"	2"-48"	2"-48"
MM	50-1200	50-1200	50-1200	50-1200	50-1200	50-1200



### SWING CHECK VALVE (BOLTED COVER / PRESSURE SEAL)

#### CHV 108

#### PSV 108

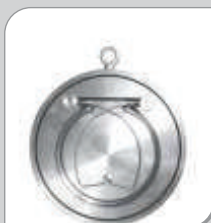
RATING	150	300	600	900	1500	2500
INCHES	2"-48"	2"-48"	2"-48"	2"-48"	2"-36"	2"-36"
MM	50-1200	50-1200	50-1200	50-1200	50-900	50-900

Note: Can be given in Internally Assembled Hinge-Pin Design  
Can be provided in Tilting-Disc Design

### LIFT CHECK VALVE (PISTON TYPE / BALL TYPE)

#### CHV 408

RATING	150	300	600	800/900	1500	2500
INCHES	2"-20"	2"-16"	2"-12"	1/2"-12"	2"-12"	2"-12"
MM	50-500	50-400	50-300	15-300	50-300	50-300



### SINGLE PLATE WAFER CHECK VALVE (SOFT SEATED)

#### CHV 405

RATING	150	300	600	900	1500
INCHES	2"-14"	2"-14"	2"-14"	2"-14"	2"-14"
MM	50-350	50-350	50-350	50-350	50-350

Check Valves



## FEATURES

DESIGN

API 6D/ API 602/ BS 5352/ ASME B16.34/ ISO 15761

### STR 304 Y TYPE STRAINER

#### STR 304

RATING	150	300	600	900	1500
INCHES	½"-36"	½"-36"	½"-30"	½"-24"	½"-16"
MM	15-900	15-900	15-750	15-600	15-400



### STR 305 BUCKET TYPE STRAINER

#### STR 305

RATING	150	300	600	900
INCHES	2"-36"	2"-36"	2"-30"	2"-24"
MM	50-900	50-900	50-750	50-600

Note: Also available in Conical Strainer.



### DBB 901 DOUBLE BLOCK & BLEED VALVE

#### DBB 901

RATING	150# to 2500#
INCHES	½" - 6"
MM	15-150

### GTV 103 / GBV 104 / CHV 117 / BLV 111 FORGED GATE / GLOBE / LIFT CHECK / BALL VALVE



Note : Available in Integral flanged / Socket-weld / Butt-weld / With pup-pieces.

#### GTV 103 / GBV 104 / CHV 117 / BLV 111

RATING	150	300	600	800	900/1500	2500
INCHES	½"-2"	½"-2"	½"-2"	½"-2"	½"-2"	½"-2"
MM	15-50	15-50	15-50	15-50	15-50	15-50

Note: "Also available in pressure seal bonnet construction".

### NLV 111 NEEDLE VALVE

#### NLV 111

RATING	800	1500	2500	4500
INCHES	½"-2"	½"-2"	½"-2"	½"-2"
MM	15-50	15-50	15-50	15-50



Strainers, DBB & Forged Steel Valves



## FEATURES

DESIGN ASME B16.34 / API 6D / API 608 / API 599 / API 609 / BS 5351 / ISO 17292 / ISO 7121 / MSS SP 110

Quarter Turn Valves



### TRUNNION MOUNTED BALL VALVE

TLV 105						
RATING	150	300	600	900	1500	2500
INCHES	2"-48"	2"-48"	2"-48"	2"-36"	2"-36"	2"-36"
MM	50-1200	50-1200	50-1200	50-900	50-900	50-900

Note: Can be provided in Top-Entry design, Side-Entry design, Fully-Welded design, Rising-Stem design, Segmented V-Notch Ball design, Two Piece/Three piece design.

### FLOATING BALL VALVE

BLV 105						
RATING	150	300	600	900	1500	2500
INCHES	½"-10"	½"-8"	½"-6"	½"-3"	½"-2"	½"-2"
MM	15-250	15-200	15-150	15-80	15-50	15-50



Note: Can be provided in Top-Entry design, Fully-Welded design, Side-Entry design, Segmented V-Notch Ball design, Two Piece/Three piece design.



### MONO-BODY FLOATING BALL VALVE (ONE PIECE)

BLV 109						
RATING	150	300	600			
INCHES	½"- 6"	½"- 6"	½"- 6"			
MM	15-150	15-150	15-150			

Note: Can be provided with Segmented V-Notch Ball design.

### BUTTERFLY VALVE DOUBLE OFFSET / TRIPLE OFFSET

BFV 601						
RATING	150	300	600			
INCHES	2"-56"	2"-56"	2"-48"			
MM	50-1400	50-1400	50-1200			



### PLUG VALVE (Pressure Balanced)

PGV 311						
RATING	900	1500	2500			
INCHES	2"-16"	2"-16"	2"-12"			
MM	50-400	50-400	50-300			



Pneumatic Ball Valve



Pneumatic High-Pressure Cut-Off Ball Valve



Intelligent Electric Ball Valve



High Platform Ball Valve



Two-Stage Pneumatic System Ball Valve



Three Way Ball Valve



Double Eccentric Butterfly Valve



Triple Eccentric Butterfly Valve



Spring Return (Deadman Handle) Auto-Close Ball Valve

# Actuated Quarter Turn Valves

# LINED VALVES



Note: Following options are available in internal lining of our metallic valves:  
Epoxy, rubber-lined(Elastomeric), Fluoroelastomer, FEP, FRE, PTFE, PP, HDPE, PFA, PVDF, PVC, CPVC



Fluorine Lined  
Control Valve



Rubber Lined  
Butterfly Valve



PTFE Lined  
Butterfly Valve



Epoxy Lined  
Ball Valve

# SPECIALIZED & CUSTOMIZED VALVES



Quick Shut-Off Valve



Special Shut-Off Valve



Plug Valve



Automatic Recirculation Valve



Bottom Discharge Valve  
of the Tank



Bellows Sealed Tank Bottom  
Discharge Valve



Double Acting Three-Way  
Regulating Cut-Off Valve

# Special Purpose Valves



Lift Type Pneumatic  
Extraction Check Valve



Lift Type Hydraulic  
Check Valve



Swing Type Pneumatic  
Extraction Check Valve



Swing Type Hydraulic  
Extraction Check Valve



Pneumatic Y-Shaped  
Drain Valve



Pneumatic Straight Through  
Drain Valve



Manual High-Pressure  
Shut-Off Valve



High Temperature  
Forged Steel Check Valve



Temperature and Pressure  
Reduction Device



Oxygen Pressure  
Regulating Valve Group

# Power Station Valves

# CONTROL VALVES



Pneumatic Control Valve



Micro Flow Control Valve



Bellow Seal Control Globe Valve



Maze Forged Steel Control Valve



Three-Way Regulating Valve



Angle Type Control Valve



Series Multi-Stage Control Valve



Axial-Flow Type Control Valve



Eccentric Rotation Control Valve



V-Shaped Control Valve



Triple Eccentric Regulating Butterfly Valve



High Temperature And Low Load (Ventilation) Butterfly Valve

# Control Valves



## Three Way Control Valve

A three-way regulating valve is essentially a combination of two types of valves—one is a merging valve (with two inlets and one outlet) and the second is a diverging valve (with a single inlet and two outlets). By integrating these two functions, the three-way valve becomes capable of regulating or combining flow, temperature, pressure, and liquid levels simultaneously within the system.



## Self- Operated Pressure Regulator

The self-operated pressure regulating valve, without the need of external energy, using the regulated medium as the power source senses changes in pressure and compares it with the set value and automatically adjusts the opening of the valve to control the pressure or pressure difference in the system. According to different regulation requirements, it can be divided into post valve pressure regulating valve or pre valve pressure regulating valve or differential pressure regulating valve.

## Control Valve

The control valve in fully modular design with high adjustment accuracy can, only by replacing the internal components of the valve, achieve different types of regulation. The product can be customized with wide range of internal components. It can meet the requirements of vast variety of industrial automation systems.





## Globe Valves for Tank Bottom

The series discharge valve is widely used in the bottom of the reactor, storage tank and other containers that discharge material. Through the end flange installed at the bottom of the tank and other containers, it achieves a smooth flow path. It successfully achieves flow control of such medium that is not easy to plug or has residual accumulation or such medium that has easy deposition or contains suspended particles.



## On-Off Ball Valve



Ball valve is a commonly used on-off valve that controls the flow of fluid by rotating the ball. It has the advantages of low flow resistance, compact appearance, quick opening and closing and tight closure.

The floating ball valve has a simple structure, tight closure the advantages of fire prevention and anti-static are widely used in various industries low pressure and small diameter pipeline systems.

The fixed ball valve (trunnion type) not only has the advantage of a floating ball valve, but also has safety functions such as mid chamber pressure relief, double blocking, and emergency grease injection, making it particularly suitable for industrial systems such as oil and gas long- distance pipelines, petroleum and chemical industries.

## Three-Way Ball Valve

A three-way ball valve is a cut-off valve with three channels which can achieve diversion or merging or switching of flow direction of the medium, successfully replacing multiple two way ball valves and thus saving space and optimizing pipeline layout.

The L-type three-way ball valve is used for medium flow direction switching. It can connect the main pipeline and the other two pipelines separately, but can only connect two orthogonal pipelines. It cannot maintain the interconnection of the third pipeline at the same time and only plays a role in flow direction switching.

The T-type three-way ball valve can connect three orthogonal pipelines to each other and cut off the third channel according to the working conditions, playing a role in diversion and merging. You can also connect any two of the three pipelines.





1. By-pass arrangement
2. Chain wheel drive
3. Extended stem
4. Extended bonnet
5. Limit switch
6. Lock – open close
7. Floor stand
8. Drain & vent
9. Bonnet test point
10. Heat dissipation bonnet
11. Inter-locking
12. Position Indicator
13. Counter Dead-Weight Arrangement
14. Hydraulic Dash Pot Arrangement
15. Pneumatic Dash Pot Arrangement
16. Gas Over Actuator
17. Hydraulic Actuator
18. Gear Drive
19. Electric Actuator
20. Pneumatic Actuator



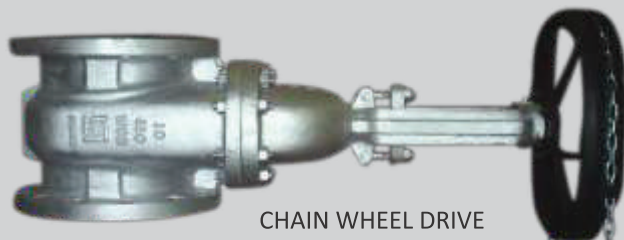
GEAR DRIVE



ELECTRIC ACTUATOR



FLOOR STAND



CHAIN WHEEL DRIVE



BY - PASS ARRANGEMENT



LIMIT SWITCH



LOCK - OPEN CLOSE



EXTENDED STEM

Accessories



باسكو  
انترناشيونال تریدينغ ذ.م.م

**PASCO**

International Trading W.L.L

## **PASCO INTERNATIONAL TRADING LLC**

**P.O.BOX: 47158, OFFICE# 750 ST. 63 BUILDING NUMBER  
71 ZONE UMM SALAL, DOHA**

**QATAR MOB : 00974 - 7787 1414, 00974 - 7047 9386**

---

**30 N. GOULD STREET, STE 33354 SHERIDAN, WYOMING 82801**

**UNITED STATES OF AMERICA ( USA)**

**USA : +1- (307) 392 - 0949**